

# Roboshot MaxiJet MX-0406



**The Jacon MaxiJet is a Mid-sized Shotcrete rig designed and built for tramming in harsh conditions, steep incline and long distances.**



The robust and reliable four-wheel drive, front wheel steer driveline consists of a hydrostatic transmission powered by a choice of diesel engines connected to Clark-Hurth steering axles. The short wheel base and four-wheel steer makes the MaxiJet extremely manoeuvrable even in the tightest situations. The MaxiJet incorporates a long stroking large volume piston type Shotcrete pump resulting in less wear and pulsation, a telescopic Shotcrete boom with 10m reach and parallel lance option, a chemical dosing system intergrated with the pump stroking and electronically metered with totaliser for the end of shift, and the cordless remote control with cord backup gives the operation more safety and felxibility throughout the job.



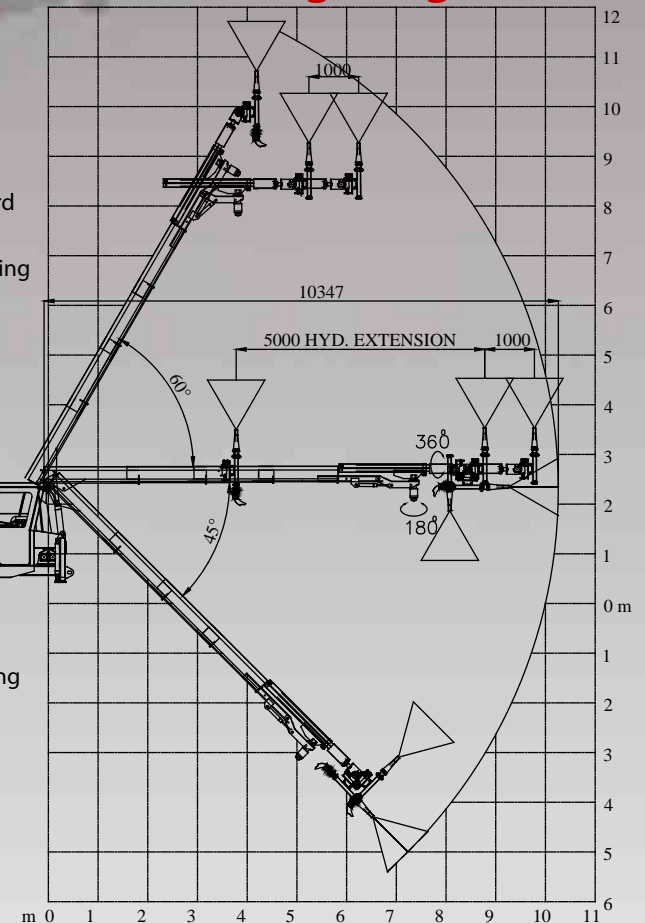
## Dimensions

- Length: 7.85 m
- Width: 2.15 m
- Height: 3.08 m
- Weight: 7.200 Kgs
- Turning Circle: 4.5 m

## Specifications

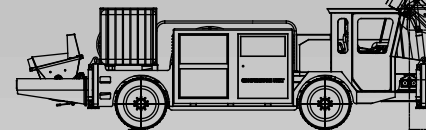
- Mercedes 906LA Diesel engine rated at 190 KW @ 2500 RPM
- Clark Hurth steering axles front and rear.
- Rexroth hydraulics.
- Four Wheel Hydrostatic Steering.
- Hydraulically applied four wheel internal wet disc brakes.
- Internal spring applied, hydraulic release secondary brake.
- 10.00 X 20 , 20 ply tyres.
- 25 kilometres per hour, fully loaded.
- Full road lighting/warning strobe lights and Catalytic converter.
- High Pressure Water Wash down with lance.
- Jacon S64 concrete pump (150mm bore X 1140mm stroke)
- Rated output 20 cubic metres per hour, with Hopper Grate Vibrator.
- Triple extension 9 metre reach slewing boom, with Oscillator on robotic head.
- Robotic head with 360 degree slew angle and 360 degree robot rotation.
- Radio remote control with corded back up.
- Catalytic converter and spark arrester.
- Operating and parts manual
- Peristaltic type chemical pump 0-7 litres per minute.
- Magnaflow Electronic chemical flowmeter and totaliser.
- Spare wheel.
- Hydraulic hopper grate vibrator.
- Hinging Pumping Unit to raise and lower hopper.

## Working Range



## Optional

- Hydraulic Driven 375 CFM on-board compressor.
- Enclosed Cabin with Air Conditioning
- Hydoscaler 50 Lpm@470 Bar
- 1000 Litre Stainless Steel Chemical Feed Tank or Water Tank
- Form Oil Pre-Spray Pump
- Parallel Lancing mechanism



- Rear View Camera
- Supplementary Emergency Steering
- Hydraulic Supply
- Fire suppression system + Fire Extinguisher

Specifications subject to change without notice.



Unit 1/ 36 Millrose Drive Malaga WA 6090 Phone: 08 9249 5544 Fax: 08 9249 5543  
 Email: spareparts@moore-quip.com.au Web: www.moore-quip.com.au